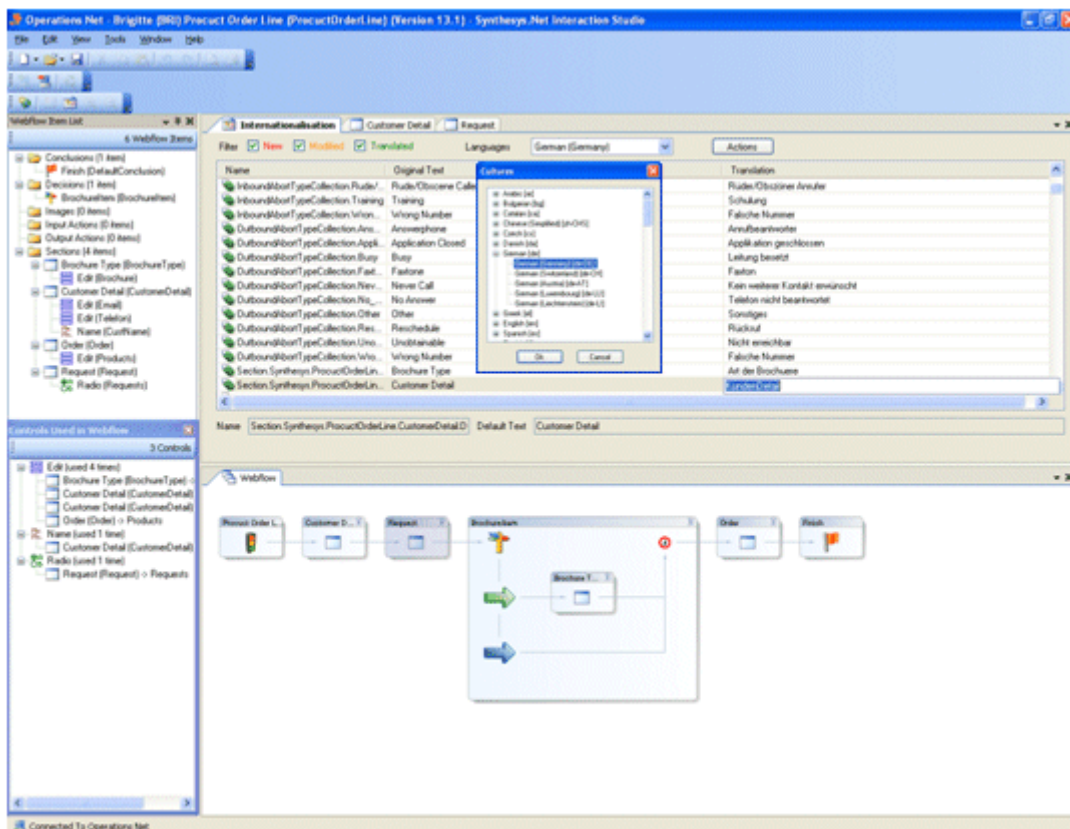


SYNTHESYS.NET INTERACTION STUDIO

Synthesys Translation Tool






THE SYNTHESYS TRANSLATION TOOL

| | |
|--|---|
| Accessing the Synthesys Translation Tool..... | 3 |
| Understanding the Internationalisation Screen..... | 4 |
| Setting Translation Language | 5 |
| Starting the Webflow Translation | 6 |
| Import / Export File Actions | 7 |

Accessing the Synthesys Translation Tool

The **Synthesys Translation Tool** forms part of the *Synthesys Interaction Studio* and is used to translate webflow information into a target language.

To access the **Translation Tool**, you need to:

- Click on the *Synthesys IDE* icon  on your desktop.
- 1. In Synthesys Interaction Studio, go to **File / Connect**, to connect the Interaction Studio to a Synthesys server.
- Click the **Synchronise**  icon, to synchronize the client machine with the server, to pick up the latest updates.
- **Open and check out** the Synthesys webflow that you wish to translate.
- Click on the **Translation Tool**  icon, to access the **Internationalisation** screen.



If no server is displayed, click **Servers** in the *Connect* window and then the **Add** button, to enter a server name and to connect to the server.

If the webflow that you wish to translate is already checked out on another machine, it needs to be checked in by the listed user, on the named machine, before you can check it out.

It is recommended that you check in your webflow, before exiting the Synthesys Interaction Studio, to ensure that the webflow can be accessed for editing on another machine and/ or by other users.

Understanding the Internationalisation Screen

Having opened and checked out your Synthesys webflow:

- Click on the **Translation Tool**  icon, to open the **Internationalisation** screen.

This view shows all translatable elements of the selected webflow.

Filter to display

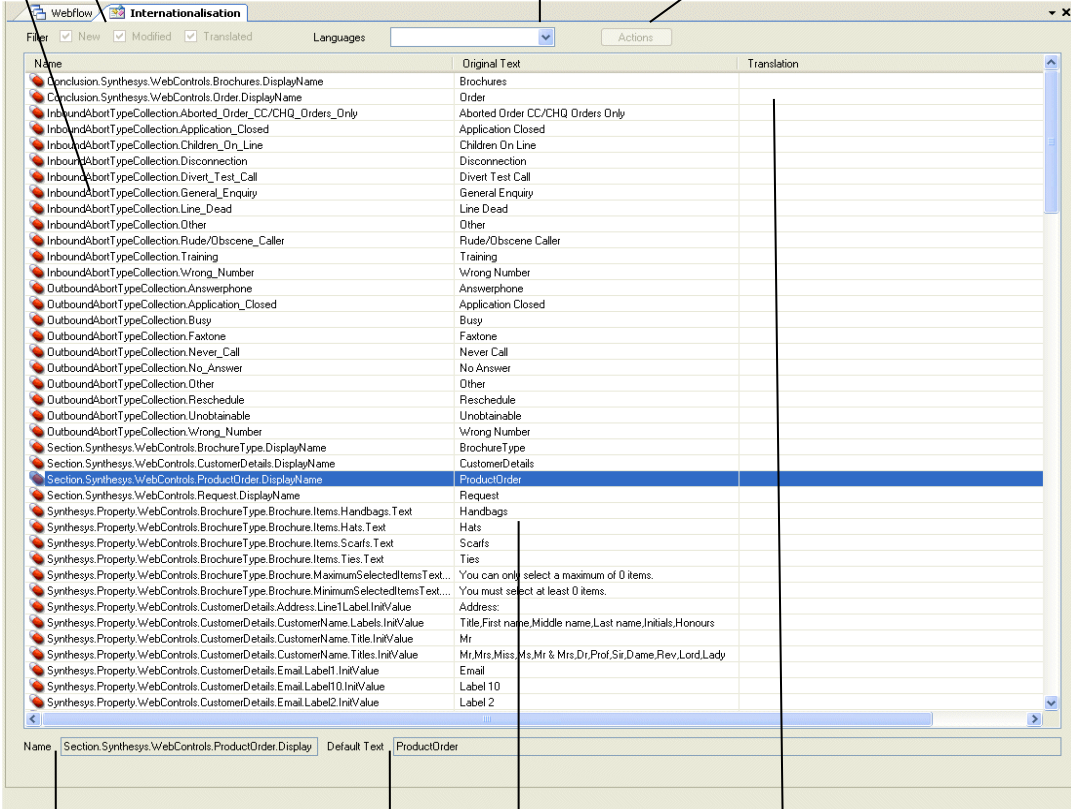
New, Modified and Translated items

Import & Export options

Names of webflow screens and controls

Languages drop down box

Actions to access



The screenshot shows the 'Internationalisation' window with a table of translatable elements. The table has three columns: 'Name', 'Original Text', and 'Translation'. The 'Name' column lists various webflow elements, with 'Section.Synthesys.WebControls.ProductOrder.Display' selected. The 'Original Text' column shows the default text for each element, such as 'ProductOrder'. The 'Translation' column is currently empty. Above the table, there are filter buttons for 'New', 'Modified', and 'Translated', a 'Languages' dropdown menu, and an 'Actions' button. Below the table, there are input fields for 'Name', 'Default Text', and 'ProductOrder'.

Name shows name of selected web screens & controls

Default Text shows the original text, selected for translation

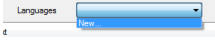
Original Text fields

Translation fields for entering translated text

Please see next pages for information about *Setting Translation Language* and *Webflow Translations*.

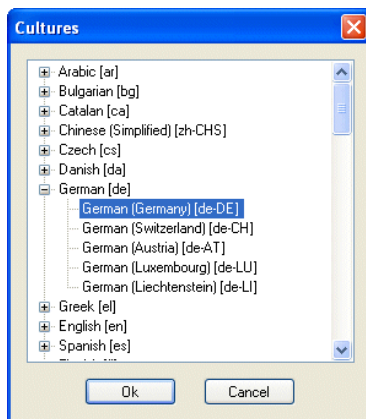
Setting Translation Language

To start the translation process, you must first define a translation language in the **Internationalisation** page of the Synthesys Interaction Studio.

- Click on the arrow of the **Languages** drop down menu  and select **New** .
- In the **Cultures** dialog subsequently displayed, choose the language that you wish to use for the translation of the selected webflow.



If a Cultures dialog box does not appear, check that that the webflow is checked out.



- Press Ok to select the language and to start a new translation

For more information, please see next page.

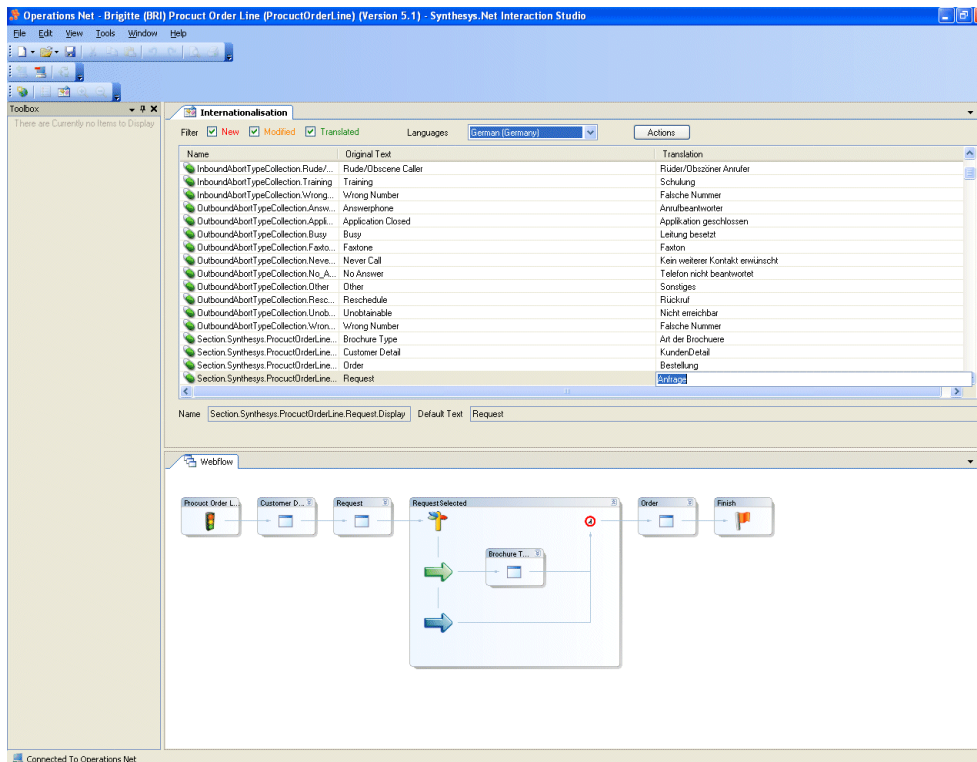
Starting the Webflow Translation

Having opened and checked out the webflow to be translated in the *Synthesys Interaction Studio* and set the target language for the translation in the **Internationalisation** screen, you can now start your translation.

- Select the text that you wish to translate in the **Original Text** column.
- Click your left mouse button into the adjacent field in the **Translation** column.
- Enter the translated text, as required.



When translating items from a comma separated list, ensure that you enter the same number of values as are in the original list (i.e. Title,FirstName,Surname etc).



| Name | Original Text | Translation |
|---------------------------------------|---------------------|---------------------------------|
| InboundAbortTypeCollection.Rude/... | Rude/Obscene Caller | Rüder/Obzöner Anrufer |
| InboundAbortTypeCollection.Training | Training | Schulung |
| InboundAbortTypeCollection.Wrong... | Wrong Number | Falsche Nummer |
| OutboundAbortTypeCollection.Answ... | Answerphone | Anrufbeantworter |
| OutboundAbortTypeCollection.Appl... | Application Closed | Anwendung geschlossen |
| OutboundAbortTypeCollection.Busy | Busy | Leitung besetzt |
| OutboundAbortTypeCollection.Faxo... | Faxtone | Faxton |
| OutboundAbortTypeCollection.Neve... | Never Call | Kein weiterer Kontakt erwünscht |
| OutboundAbortTypeCollection.No_A... | No Answer | Telefon nicht beantwortet |
| OutboundAbortTypeCollection.Other | Other | Sonstiges |
| OutboundAbortTypeCollection.Resc... | Reschedule | Rückruf |
| OutboundAbortTypeCollection.Unob... | Unobtainable | Nicht erreichbar |
| OutboundAbortTypeCollection.Wron... | Wrong Number | Falsche Nummer |
| Section.Synthesys.ProductOrderLine... | Brochure Type | Art der Broschüre |
| Section.Synthesys.ProductOrderLine... | Customer Detail | KundenDetail |
| Section.Synthesys.ProductOrderLine... | Order | Bestellung |
| Section.Synthesys.ProductOrderLine... | Request | Anfrage |



Save and publish the webflow, before opening the **Synthesys Portal** in the **Web Browser**.

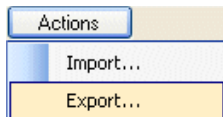
Test different language translations, by setting the language preference, as required in the Web Browser (**Tools – Internet Option – Languages**)

Import / Export File Actions

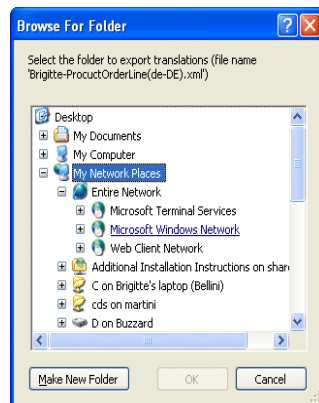
Using the **Import / Export** options, available via the **Internationalisation** page in the *Synthesys Interaction Studio*, you can import or export translation xml files.

To start the Import or Export:

- Click on the **Actions** button and select either **Import** or **Export**.



- In the **Browse For Folder** dialog, locate the **xml translation file** that you wish to import, or select the destination folder for your export.
- If required, you can click the **Make New Folder** button and create a new folder in which to **store your xml export file**.



- Press **Ok** to import/ export the *translation xml file*.
- Press **Cancel** to cancel the action.

```
<?xml version="1.0" encoding="utf-8" standalone="yes" ?>
- <Webflow Account="Brigitte" Webflow="ProctOrderLine" Version="13.4" xmlns="urn:118nexportfile-schema">
- <Translations Locale="de-DE">
- <Translation Source="Header">
  <Name>InboundAbortTypeCollection.Application_Closed</Name>
  <OriginalValue>Application Closed</OriginalValue>
  <TranslatedValue>Applikation geschlossen</TranslatedValue>
</Translation>
- <Translation Source="Header">
  <Name>InboundAbortTypeCollection.Divert_Test_Call</Name>
  <OriginalValue>Divert Test Call</OriginalValue>
  <TranslatedValue>Abgeleiteter Test Call</TranslatedValue>
</Translation>
- <Translation Source="Header">
  <Name>InboundAbortTypeCollection.General_Enquiry</Name>
  <OriginalValue>General Enquiry</OriginalValue>
  <TranslatedValue>Allgemeine Anfrage</TranslatedValue>
</Translation>
- <Translation Source="Header">
  <Name>InboundAbortTypeCollection.Wrong_Number</Name>
  <OriginalValue>Wrong Number</OriginalValue>
  <TranslatedValue>Falsche Nummer</TranslatedValue>
</Translation>
- <Translation Source="Header">
  <Name>InboundAbortTypeCollection.Training</Name>
  <OriginalValue>Training</OriginalValue>
  <TranslatedValue>Schulung</TranslatedValue>
</Translation>
- <Translation Source="Header">
```