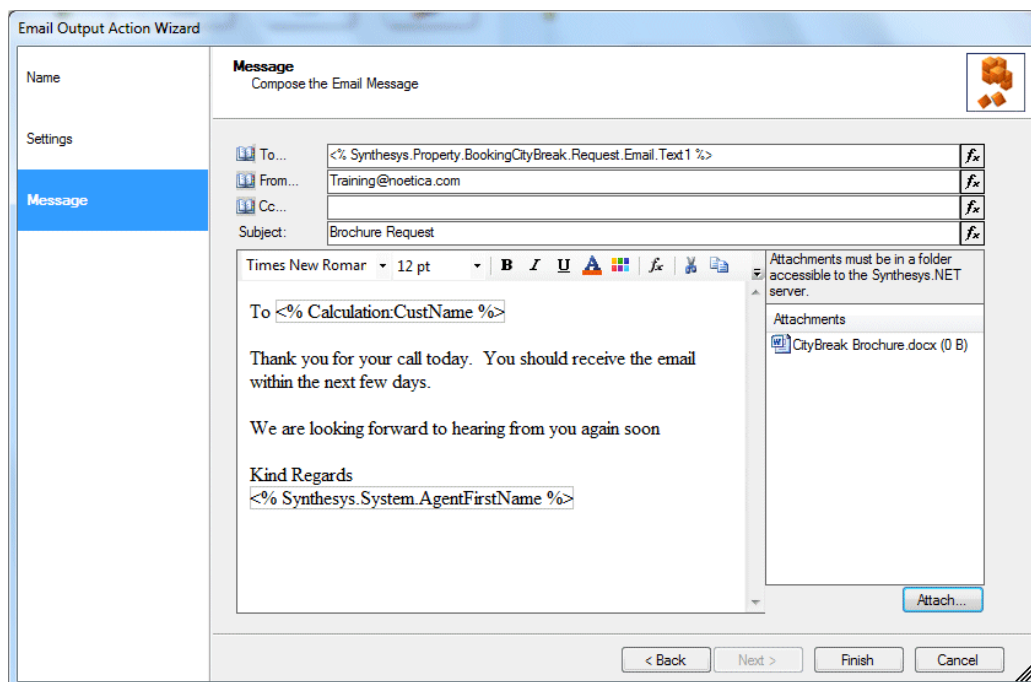


# SYNTHESSYS.NET INTERACTION STUDIO

## Email Output Actions




## SYNTHESYS EMAIL OUTPUT ACTION

EMAIL OUTPUT ACTION WIZARD .....	3
Email Output Name.....	3
Settings.....	3
Message .....	4

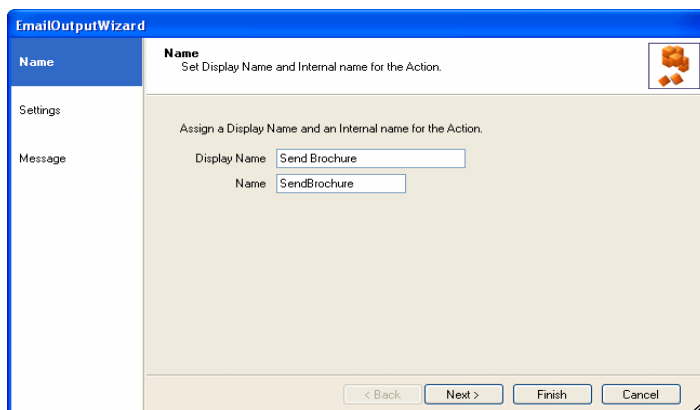
## EMAIL OUTPUT ACTION WIZARD

The *Email Output Action* enables users to send an instant email as part of the Webflow.

- In the Synthesys Interaction Studio, select  **Email Output Action** from the *Core Action* part of the Toolbox and drop it at the desired part of the Webflow.

### Email Output Name

The first page of the *Email Output Wizard* prompts you to enter a name for the *Email Output Action*.

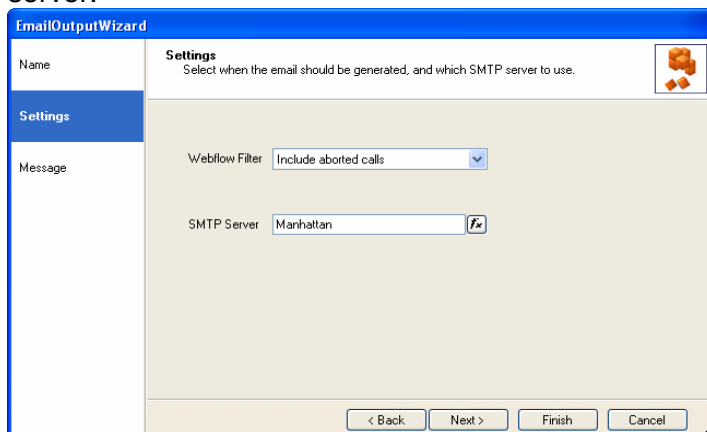


The screenshot shows the 'Name' page of the 'EmailOutputWizard'. The title bar reads 'EmailOutputWizard'. On the left, there is a sidebar with 'Name' selected, and 'Settings' and 'Message' are visible below it. The main area is titled 'Name' and contains the instruction 'Set Display Name and Internal name for the Action.' Below this, it says 'Assign a Display Name and an Internal name for the Action.' There are two text input fields: 'Display Name' with the value 'Send Brochure' and 'Name' with the value 'SendBrochure'. At the bottom, there are four buttons: '< Back', 'Next >', 'Finish', and 'Cancel'.

### Settings

In the **Settings** page of the Wizard, under the **Webflow Filter** option, you can choose to include aborted calls, generate emails on aborted calls only, or exclude aborted calls.

To specify the email server to be used, enter the name of the required email server into the **SMTP Server** field, or alternatively create a calculation to stipulate the email server.

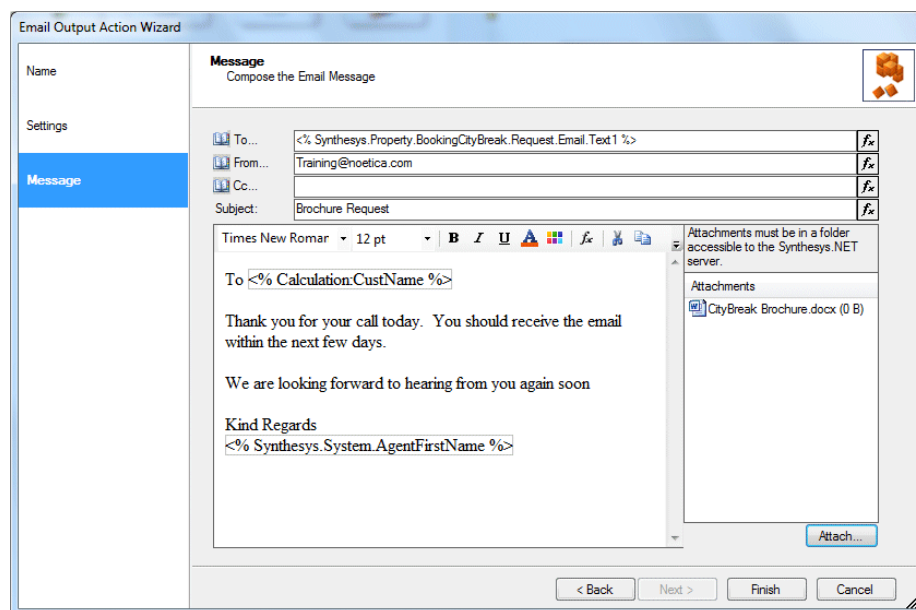


The screenshot shows the 'Settings' page of the 'EmailOutputWizard'. The title bar reads 'EmailOutputWizard'. On the left, there is a sidebar with 'Settings' selected, and 'Name' and 'Message' are visible below it. The main area is titled 'Settings' and contains the instruction 'Select when the email should be generated, and which SMTP server to use.' There are two settings: 'Webflow Filter' with a dropdown menu set to 'Include aborted calls' and 'SMTP Server' with a text input field containing 'Manhattan' and a small 'fx' icon to its right. At the bottom, there are four buttons: '< Back', 'Next >', 'Finish', and 'Cancel'.

## Message

In the Message page of the Wizard

- Enter the email address of the recipient, the sender and the subject matter of the email.
- You can also create a calculation to specify the email address of the recipient, the sender and the subject matter of the email.
- Next, write the content of the email into the text page provided, using the *Formatting Toolbar* to apply text formatting and calculations as required.



Click **Finish**, to display the configured *Email Output Action* in the Webflow design area.