

SYNTHESSYS.NET INTERACTION STUDIO

WebService Output Actions

WebService Output Action Wizard

WebService URL
Enter the Webservice URL

Name

Settings

WebService URL

WebService Properties

WebService Methods

WebService URL
http://dntest01.tst/NoProerties.aspx?WSDL

Execution URL (f different)

< Back Next > Finish Cancel

WebService Output Action Wizard

WebService Methods
Select a Webservice method to execute

Name

Settings

WebService URL

WebService Properties

WebService Methods

WebService Method
DoStringInsert

Input Parameters

DoStringInsert	
columnsPiped	FirstNameSurname
table	CityBreak
valuesPiped	<% Calculation:UpdateInfo %>


< Back Next > Finish Cancel

WEBSERVICE OUTPUT ACTION

Web Service Output Action Wizard	3
Name	3
Settings.....	3
WebService URL	4
WebService Properties	4
Web Service Methods	5

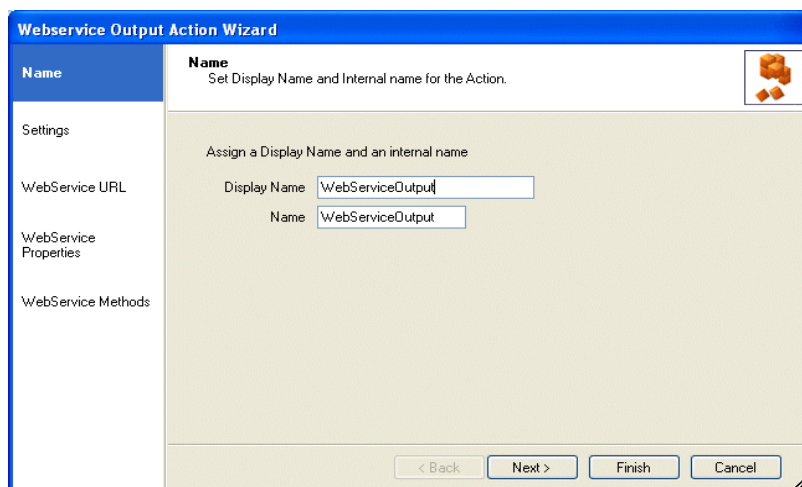
Web Service Output Action Wizard

The Web Service Output Action enables connection to a web service in order to export data from a Synthesys webflow at runtime.

In the Synthesys Interaction Studio, select  Web Service Output Action from the Core Actions part of the Toolbox and drop it at the desired part of the Webflow.

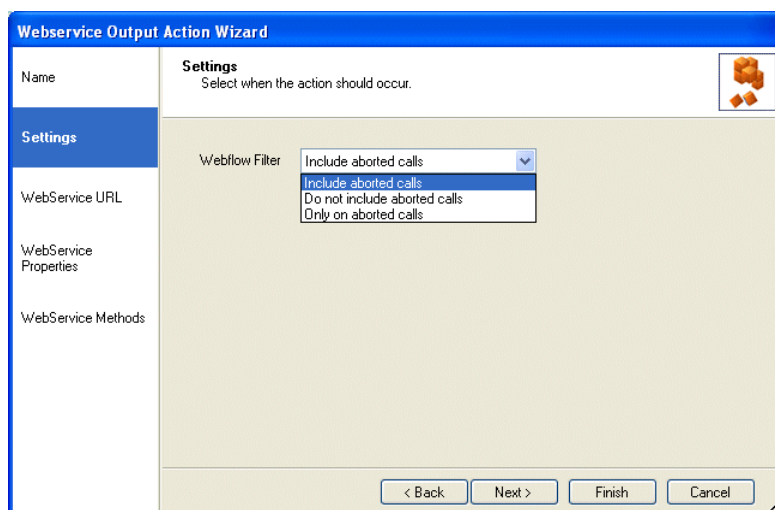
Name

The first page of the *Web Service Output Action Wizard* prompts you to enter a name for the Web Service Output Action.



Settings

In the *Settings* page of the Wizard, under the **Webflow Filter** option, you can select if the output that you generate should include aborted calls or not, or aborted calls only



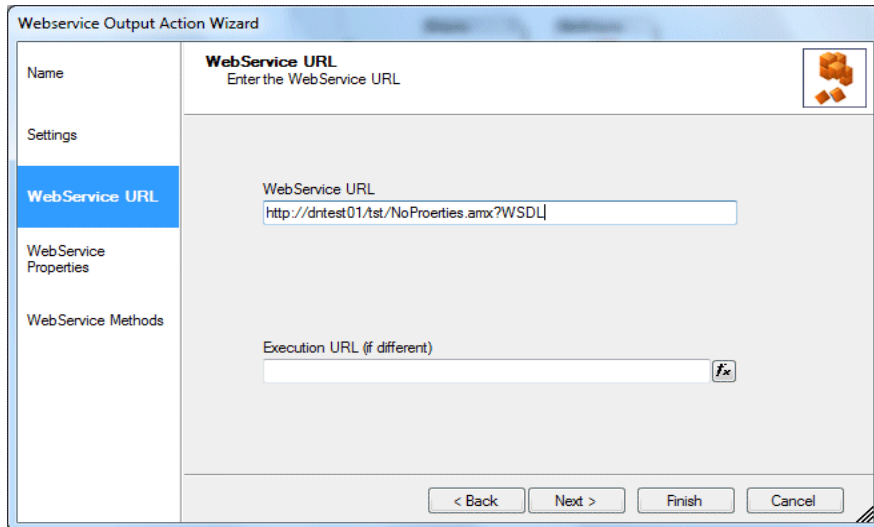
WebService URL

In the Web Service URL part of the wizard, enter the details of the web service that you wish to call.



If the URL that is used at runtime is different to that used at design time when taking test calls, then you can enter or calculate the **Execution URL** into the Execution URL field.

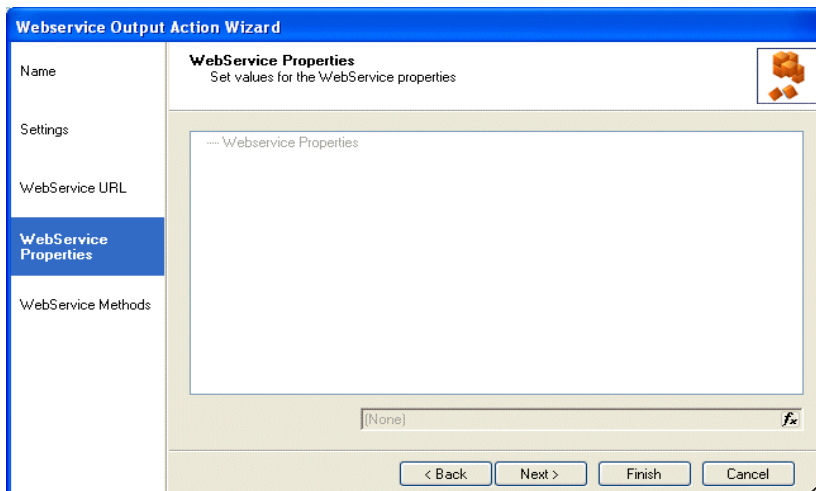
Ensure that the URL is set correctly, as otherwise the web service action will fail at run time.



The screenshot shows the 'Webservice Output Action Wizard' dialog box. The 'WebService URL' step is selected in the left-hand navigation pane. The main area is titled 'WebService URL' and contains the instruction 'Enter the WebService URL'. There are two text input fields: the first is labeled 'WebService URL' and contains the text 'http://dntest01.tst/NoProerties.amx?WSDL'; the second is labeled 'Execution URL (if different)' and is currently empty. A small 'fx' icon is located to the right of the second field. At the bottom of the dialog, there are four buttons: '< Back', 'Next >', 'Finish', and 'Cancel'.

WebService Properties


This page will display any properties that are available from the web service, and allows the user to set the values to be sent to the properties.

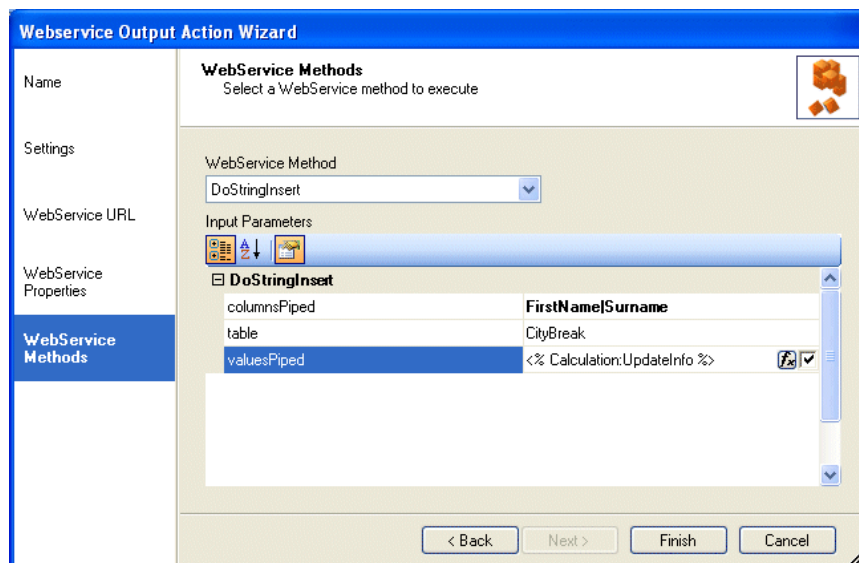


The screenshot shows the 'Webservice Output Action Wizard' dialog box. The 'WebService Properties' step is selected in the left-hand navigation pane. The main area is titled 'WebService Properties' and contains the instruction 'Set values for the Webservice properties'. Below this is a large empty rectangular area labeled '--- Webservice Properties'. At the bottom of this area, there is a text input field containing '[None]' and a small 'fx' icon. At the bottom of the dialog, there are four buttons: '< Back', 'Next >', 'Finish', and 'Cancel'.

Web Service Methods

The *WebService Methods* page displays the methods that are available from the web service and allows users to specify any data that is required for these methods.

1. Select the web service method that you wish to call from the drop down list to display the corresponding parameters available for this method.
2. Next, set the values to be passed to each parameter. These can be hard coded or you can set a calculation using the calculations  icon, to make the parameter dynamic.



Click **Finish**, to display the configured Web Service output action in the webflow design area.

